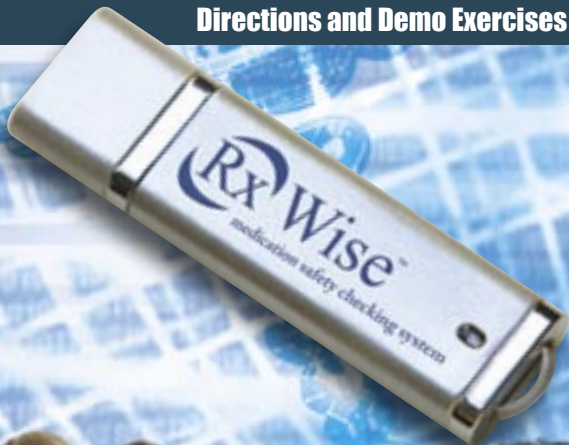


Rx Wise™
medication safety checking system
When *safe* isn't safe enough.™

Protect Your Family From Adverse Drug Reactions.

**RxWise™ Consumer Flash Drive
Directions and Demo Exercises**



iATROGEN

Launch RxWise

Insert the RxWise Flash Drive into the USB port of your computer. A high-speed 2.0 port is preferred, but you can use a 1.0.

The auto-run function should launch the application in a minute or two. If you are on a large network you may need to disconnect from the network before your Flash Drive will launch.

RxWise USB Drive operates on Windows XP, 2000 and Me, and requires a minimum of 256MB of memory.



Demo Exercises: Set Up A Profile

1. **Logon**—When you first logon, **only** use the following information:

User Name: RxWise (case-sensitive)

PIN: 1234



2. **Your User Profile**—Create your password protected profile. Let's create a profile for John Smith. He was born 10/10/1930, is male, and his Logon/PIN is demo/demo. You won't be saving this profile, so you'll be able to create your own later.



3. **Analyze a Medication's Risk Potential**—Now, let's analyze the safety of a prescription for John Smith. He is interested in potential issues about “Elavil.”

- a) On the MEDICATION SELECTION window, click on the **PRESCRIPTION** button. Type the first few letters of the drug's name, then highlight it by clicking on the name “Elavil” in the pull-down list. Click **ADD**.



- b) This drug now appears in the Analyzing section of MY MEDICINE CABINET.

4. **Add More Medications**—Now we'll add John's self reported medication history.

a) Click on **GO** to advance to the CREATE OR EDIT YOUR MEDICAL RECORD screen.

b) In the MEDICATIONS window:

Click the **NON-PRESCRIPTION OR HERBAL** button. Type a few letters of the drug name “Tylenol.” Then highlight “Tylenol” and click **ADD**.

c) Click the **PRESCRIPTION** button. Type a few letters of the drug “Glyburide,” highlight “Glyburide” and click **ADD**.



5. Enter Medical Conditions—Now let's enter the known medical conditions for John Smith. In the CONDITIONS window:




- a) Type a few letters of the disease name "Hypertension," highlight it and click **ADD**.
- b) Type a few letters of the disease name "Benign Prostatic Hypertrophy," highlight it and click **ADD**.

Now you've created a disease history for John.

6. **Enter Allergies**—In the ALLERGY window, type a few letters of the allergy “Acetaminophen Allergy.” Highlight it and click **ADD**.

The screenshot shows the RxWise web application interface. At the top, there is a navigation menu with options like Home, Medication Selection, Prescription Security, Overview, My Rx, My Rx History, My Rx Alerts, My Rx History, My Rx History, and My Rx History. The RxWise logo is on the left, and the word "ALLERGY" is on the right. Below the navigation is a header section titled "Create or Edit Your Medical Record" with a sub-header "Please create or update your medical record to reflect your current medications, conditions, and medication allergies." and a note "This page is the "Online RxWise" "Add/Ed" feature to provide". There is a small image of a woman and a child. Below the header are three main sections: "Allergies", "Conditions", and "Allergies". The "Allergies" section on the left has a search bar with "ACETAMINOPHEN" entered and a list of results. The "Conditions" section in the middle has a search bar with "ACETAMINOPHEN" entered and a list of results. The "Allergies" section on the right has a search bar with "ACETAMINOPHEN" entered and a list of results. At the bottom of each section is an "ADD" button. A red arrow points from the text above to the "ADD" button in the "Allergies" section on the right. Another red arrow points from the text above to the "ADD" button in the "Conditions" section in the middle.

7. **Perform Analysis**—Click on **PERFORM RXWISE ANALYSIS**.

- a) The following will appear:  **Alert Messages**,  **Caution Warnings**, and  **Information Advisories**.
- b) To view allergy messages, click **VIEW ALLERGY ✓ RESULT**.



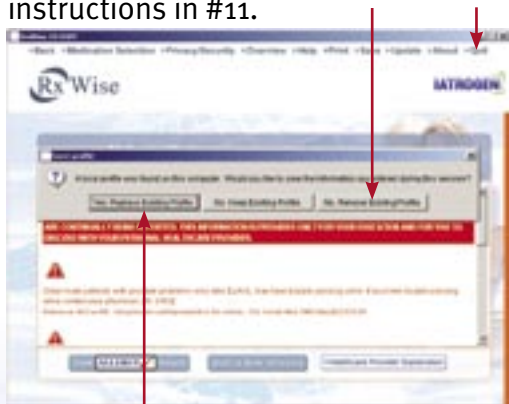
- c) To view messages for medical practitioners, click **HEALTHCARE PROVIDER EXPLANATION**.
- d) The PRINT/PDF generator function uses the report currently on the screen. You can use the PDF generator to email your report to your healthcare provider.

8. Update Medical Record—Your medical record will change over time. Let's update Mr. Smith's history to add "Congestive Heart Failure." Click **START NEW ANALYSIS**, then click **GO**. This will take you to the CONDITIONS window. Type a few letters of the disease name "Congestive Heart Failure," highlight it and click **ADD**.


9. Perform New Analysis—Now let's check for risks for an herbal medicine, "St. John's Wort" against the updated medical history. Click **MEDICATION SELECTION** on the top menu bar.

- Notice that "Elavil" is no longer in the ANALYZING window when you start a new analysis.
- On the MEDICATION SELECTION window, click on the **NON-PRESCRIPTION OR HERBAL** button. Type a few letters of the drug "St. John's Wort," highlight it and click **ADD**.
- Click on **GO** to move to the CREATE OR EDIT YOUR MEDICAL RECORD screen. Click **PERFORM RXWISE ANALYSIS**.
- Any new alerts for "St. John's Wort" will appear on the RESULT screen.

10. End The Session—To end the session, click **QUIT** at the top of the screen. Since this was only a demo, click **NO** to SAVE PROFILE. Remove the Flash Drive by following the instructions in #11.



a) When you are ready to create your profile, re-insert the Flash Drive, re-enter RxWise using the Logon/PIN RxWise/1234, but this time record your own profile and medical/medication history information. When exiting the application this time, click **YES** to save your profile and history information. Your personal data will be saved when you logon next.

11. Remove Information—To remove medications or medical information from your profile, simply click on the red trash can icon. 

12. Remove/Eject RxWise—IMPORTANT: You should use the “REMOVE HARDWARE” tool in your system tray to SAFELY remove the Flash Drive.

- The icon for your Flash Drive should appear in the lower right on your computer screen.
- Single click on this icon and look for the USB drive that has two letter designations. That’s the device you want to uninstall. Follow your computer’s instructions to unplug or eject the hardware.
- You can now safely remove the RxWise tool.

13. Update—It’s very important that you register your copy of RxWise. Periodically, you’ll receive an email from Iatrogen that an update is available. Click on the link provided, or the **UPDATE** button to go to www.rxwise.com to download and install your update. If you don’t have regular email access, call 866-RxWise4 to request the CD version of the update.



Enjoy using RxWise. We hope it provides you with confidence that you are helping reduce your risk of serious adverse drug reactions.

YOU MUST CONSULT WITH YOUR PHYSICIAN OR PHARMACIST BEFORE MAKING ANY CHANGE TO YOUR MEDICATION THERAPY. NOT ALL MEDICATION RISKS ARE KNOWN OR REPORTED IN THE LITERATURE, AND NEW MEDICATION RISKS ARE CONTINUALLY BEING REPORTED. THIS INFORMATION IS PROVIDED ONLY FOR YOUR EDUCATION AND FOR YOU TO DISCUSS WITH YOUR PERSONAL PROVIDER.

Remember, it is very important to install all RxWise updates when notified. Information on ADR risks changes frequently.



12801 World Gate Drive, Suite 500, Herndon, VA 20170
866-RxWise4 (866-799-4734)
www.rxwise.com